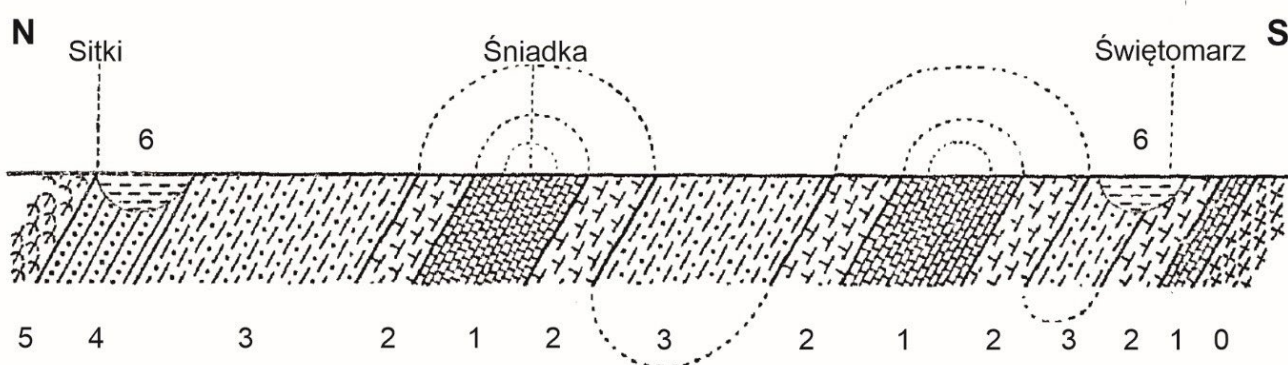


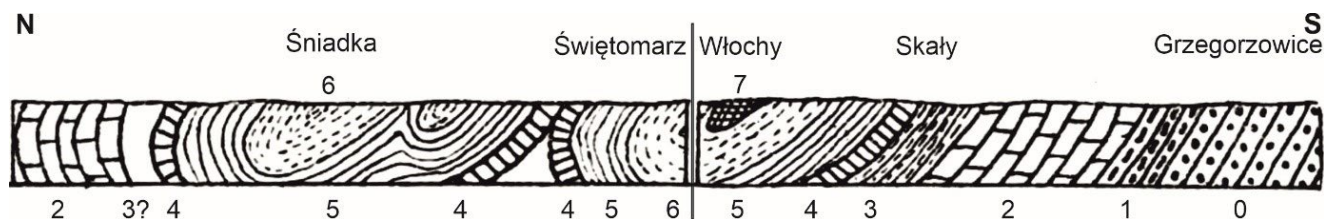
**SUPPLEMENTARY MATERIAL TO:**

Racki, G., Wójcik, K., Halamski, A. T. & Narkiewicz, M., 2022. Middle Devonian Skąły Formation in the Holy Cross Mountains (Poland) – formal description and subdivision based on new field data. *Annales Societatis Geologorum Poloniae*, 92: 425–444. <https://doi.org/10.14241/asgp.2022.18>

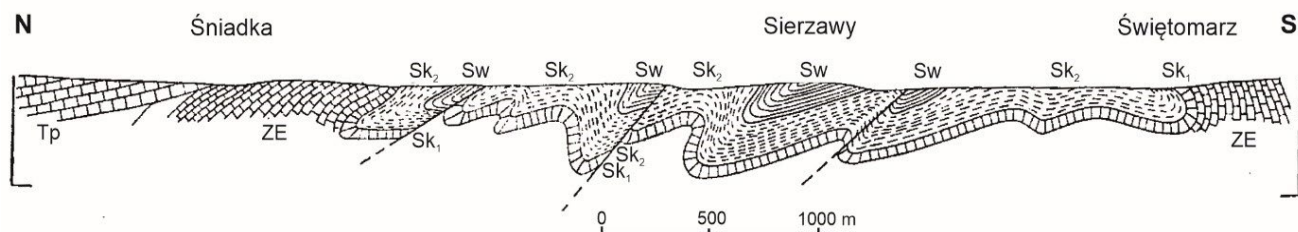
**EVOLVING TECTONIC CONCEPTS OF THE CENTRAL PART OF BODZENTYN SYNCLINE BETWEEN ŚWIĘTOMARZ AND ŚNIADKA, AS EXPOSED ALONG PSARKA RIVER (SEE FIG. 2B)**



**Fig. 1.** Świątomarz-Śniadka section after Siemiradzki (1903, fig. 1, p. 118), based on Gürich (1896, map in p. 57).  
 0 – Lower Devonian quartzites, 1 – greywacke shales without fossils, 2 – Middle Devonian shales with *Reticularia*,  
 3 – Middle Devonian beds with *Bifida*, 4 – Crinoid beds, 5 – Coral dolomites, 6 – Upper Devonian shales with *Buchiola retrostriata*.



**Fig. 2.** Combined section through the Northern (= Bodzentyn) Syncline after Sobolew (1909, fig. 2, p. 155).  
 0 – Klonów Sandstone, 1 – Grzegorzowice Beds, 2 – dolomite, 3 – Brachiopod Shale, 4 – Crinoid Limestone, 5 – Sierzawy Beds,  
 6 – Świątomarz Beds, 7 – Kadzielnia Limestone.



**Fig. 3.** Świątomarz-Śniadka section after Czarnocki (1950, fig. 13B).  
 ZE – Givetian and Eifelian dolomites, Sk<sub>1</sub> – crinoid beds (basis of the Skąły series), Sk<sub>2</sub> – Skąły series, Sw – Świątomarz series,  
 Tp – Bunter Sandstone.

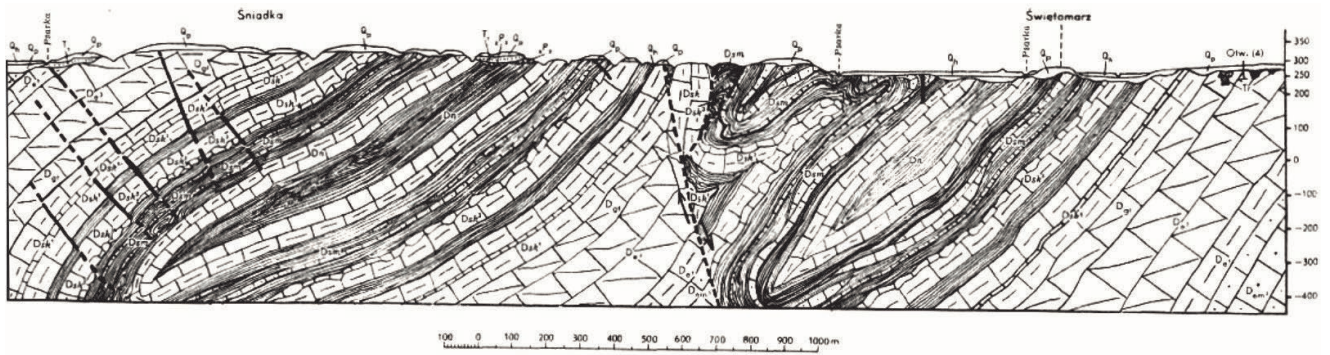


Fig. 4. Świętomarz-Śniadka section after Filonowicz (1968, plate 7).

Devonian:  $D_{em1}$  – sandstones and shales (Emsian),  $D_e^1$  – marls and limestones (Eifelian),  $D_e^2$  – dolomites and marls (Eifelian),  $D_{gt}$  – dolomites (Givetian),  $D_{sk}^1$  – lower Skąły beds (marls with intercalations of shales and limestones; Givetian);  $D_{sk}^3$  – upper Skąły beds (shales and marls with intercalations of nodular limestones; Givetian);  $D_{sm}$  – Świętomarz beds (shales and sandstones; Givetian),  $D_n$  – Nieczulice beds (shales, marls and limestones). Explanations for rocks other than Devonian omitted.

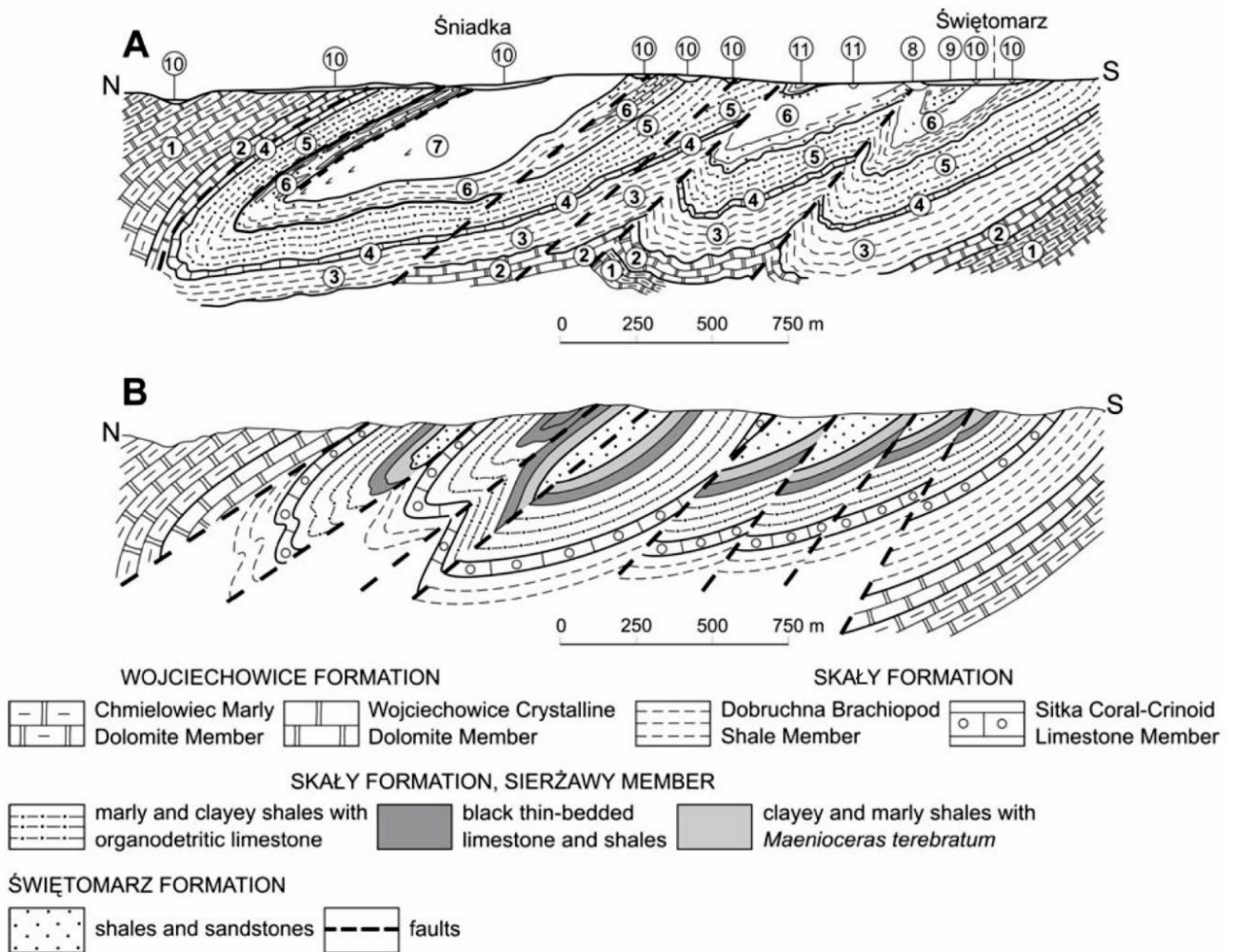


Fig. 5. Świętomarz-Śniadka section after Kłossowski (1985, fig. 2; A) and Woroncowa-Marcinowska (2012, fig. 9B; B), shown jointly for comparison in figure 9 by Woroncowa-Marcinowska (2012).

Explanations refer to numbers in circles (A): 1 – Wojciechowice Formation, Chmielowiec Marly Dolomite Member; 2 – Wojciechowice Crystalline Dolomite Member; 3 – Skąły Formation, Dobruchna Brachiopod Shale Member; 4 – Sitka Coral-Crinoid Limestone Member; 5 – Sierżawy Member; 6 – Świętomarz Formation; 7 – Śniadka Formation; 8 – Zechstein conglomerates; 9 – Buntsandstein; 10 – loess; 11 – deluvia.